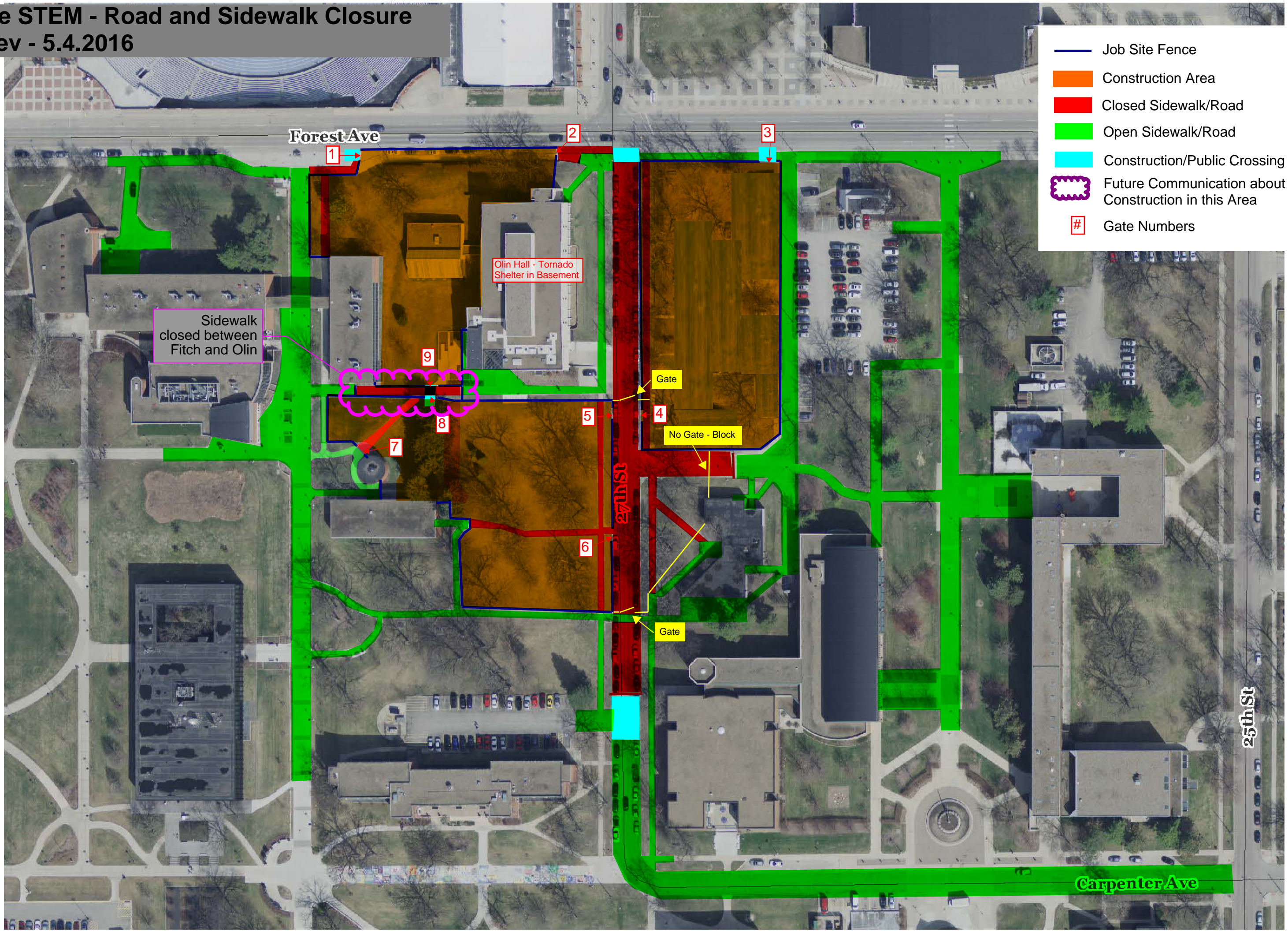


Drake STEM - Road and Sidewalk Closure

Rev - 5.4.2016



- Job Site Fence
- Construction Area
- Closed Sidewalk/Road
- Open Sidewalk/Road
- Construction/Public Crossing
- Future Communication about Construction in this Area
- # Gate Numbers

Sidewalk closed between Fitch and Olin

Olin Hall - Tornado Shelter in Basement

Gate

No Gate - Block

Gate

25th St

Carpenter Ave

Forest Ave

27th St